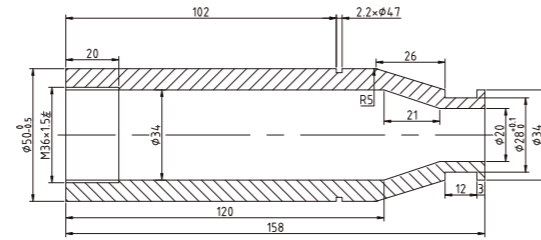


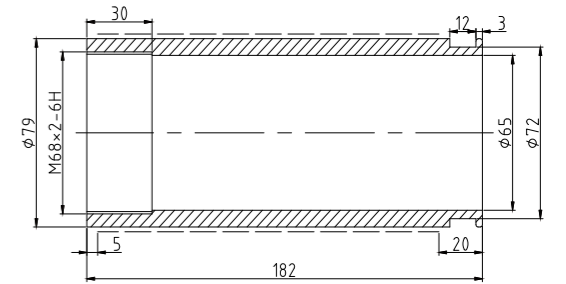
BT.12.108.1/108.2
VS1-12/630A

名称: 触臂
Name: Contact arm
材质: 铜/铝
Material: Copper/Aluminum



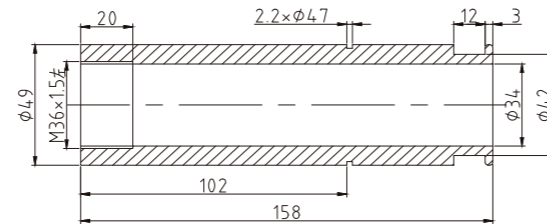
BT.12.112
VS1-12/2000A

名称: 触臂
Name: Contact arm
材质: 铜
Material: Copper



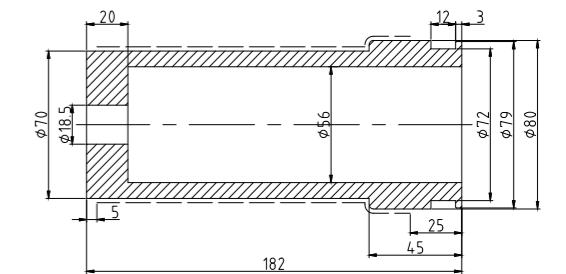
BT.12.109.1/109.2
VS1-12/1250A

名称: 触臂
Name: Contact arm
材质: 铜/铝
Material: Copper/Aluminum



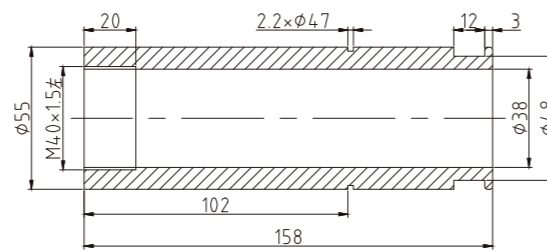
BT.12.113
VS1-12/2000A

名称: 触臂
Name: Contact arm
材质: 铜
Material: Copper



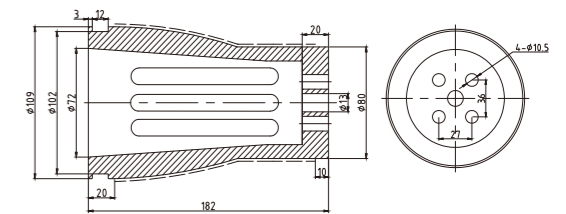
BT.12.110
VS1-12/1600A

名称: 触臂
Name: Contact arm
材质: 铜
Material: Copper



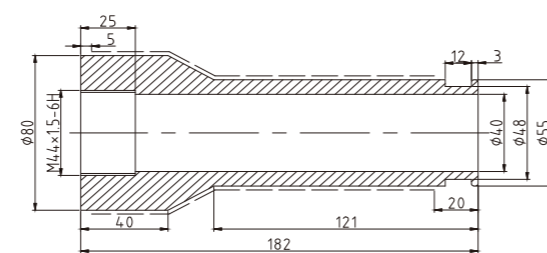
BT.12.114
VS1-12/2500A-3150A

名称: 触臂
Name: Contact arm
材质: 铜
Material: Copper



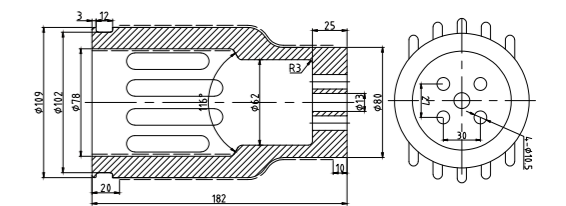
BT.12.111
VS1-12/1600A

名称: 触臂
Name: Contact arm
材质: 铜
Material: Copper



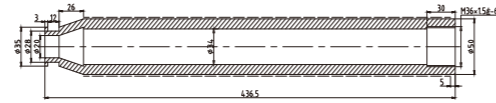
BT.12.115
VS1-12/4000A

名称: 触臂
Name: Contact arm
材质: 铜
Material: Copper



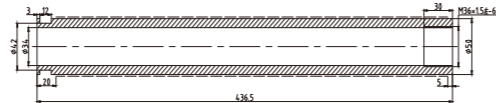
BT.12.116.1/116.2
VS1-12/630A

名称: 触臂
Name: Contact arm
材质: 铜/铝
Material: Copper/Aluminum



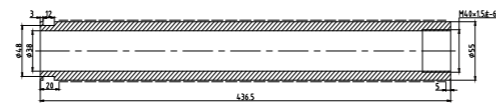
BT.12.117.1/117.2
VS1-12/1250A

名称: 触臂
Name: Contact arm
材质: 铜/铝
Material: Copper/Aluminum



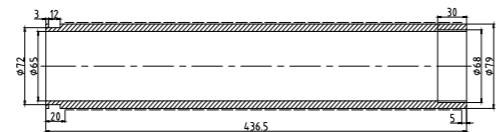
BT.12.118
VS1-12/1600A

名称: 触臂
Name: Contact arm
材质: 铜
Material: Copper



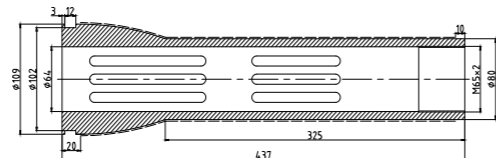
BT.12.119
VS1-12/2000A

名称: 触臂
Name: Contact arm
材质: 铜
Material: Copper



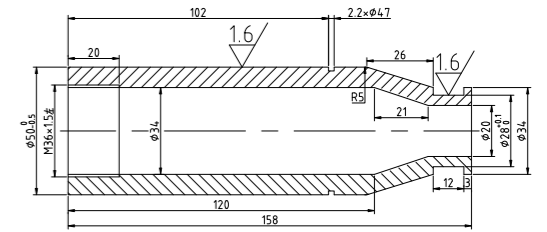
BT.12.120
VS1-12/2500A-3150A

名称: 触臂
Name: Contact arm
材质: 铜
Material: Copper



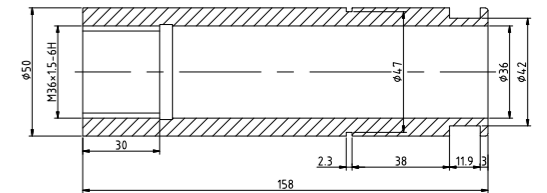
BT.12.121.1/121.2
VS1-12/630A

名称: 触臂
Name: Contact arm
材质: 铜/铝
Material: Copper/Aluminum



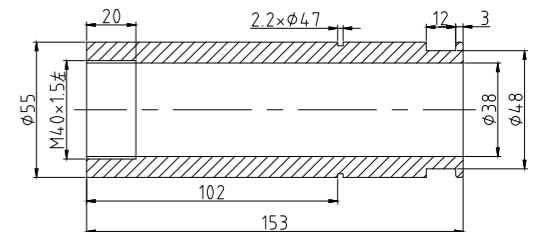
BT.12.122.1/122.2
VS1-12/1250A

名称: 触臂
Name: Contact arm
材质: 铜/铝
Material: Copper/Aluminum



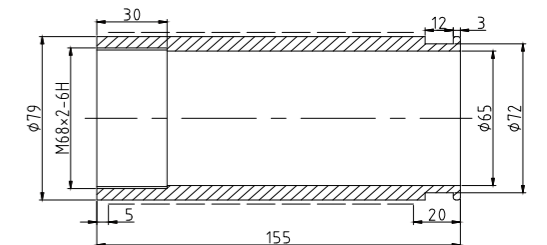
BT.12.123
VS1-12/1600A

名称: 触臂
Name: Contact arm
材质: 铜
Material: Copper



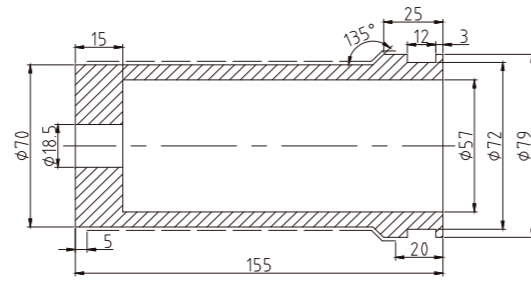
BT.12.124
VS1-12/2000A

名称: 触臂
Name: Contact arm
材质: 铜
Material: Copper



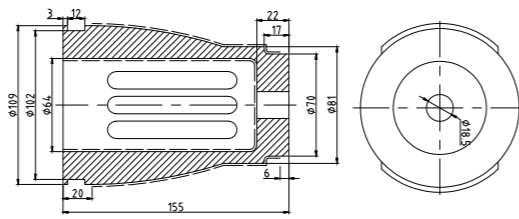
BT.12.125
VS1-12/2000A

名称: 触臂
Name: Contact arm
材质: 铜
Material: Copper



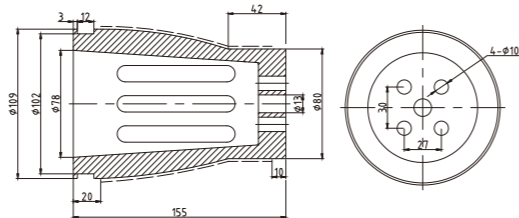
BT.12.126
VS1-12/2500A-3150A

名称: 触臂
Name: Contact arm
材质: 铜
Material: Copper



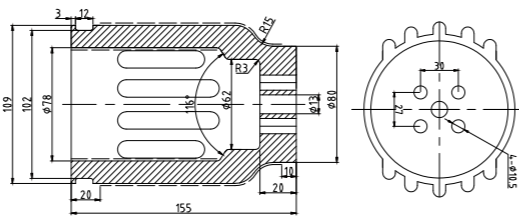
BT.12.127
VS1-12/3150A

名称: 触臂
Name: Contact arm
材质: 铜
Material: Copper



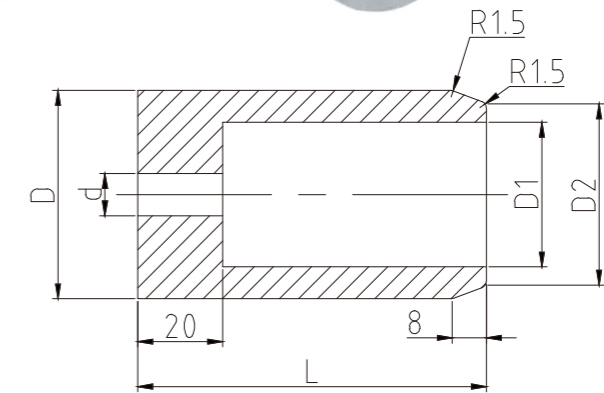
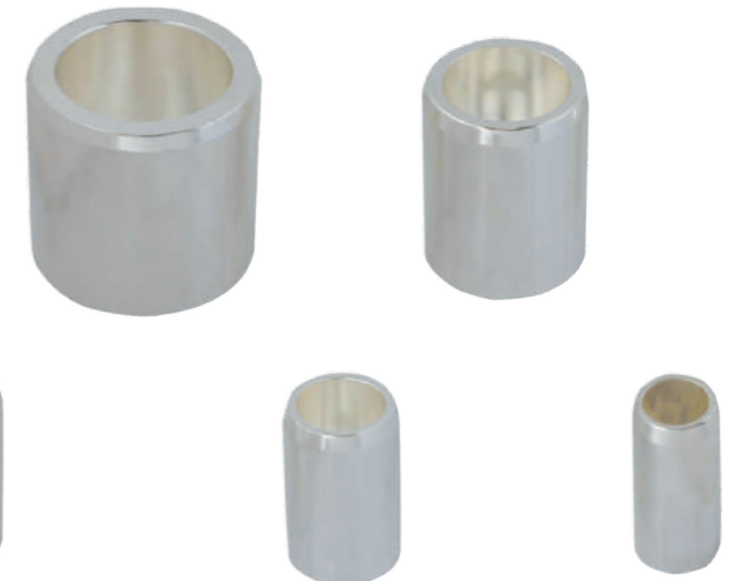
BT.12.128
VS1-12/4000A

名称: 触臂
Name: Contact arm
材质: 铜
Material: Copper



BT.12.129-134
630A-4000A

名称: 静触头
Name: Static contact
材质: 铜
Material: Copper

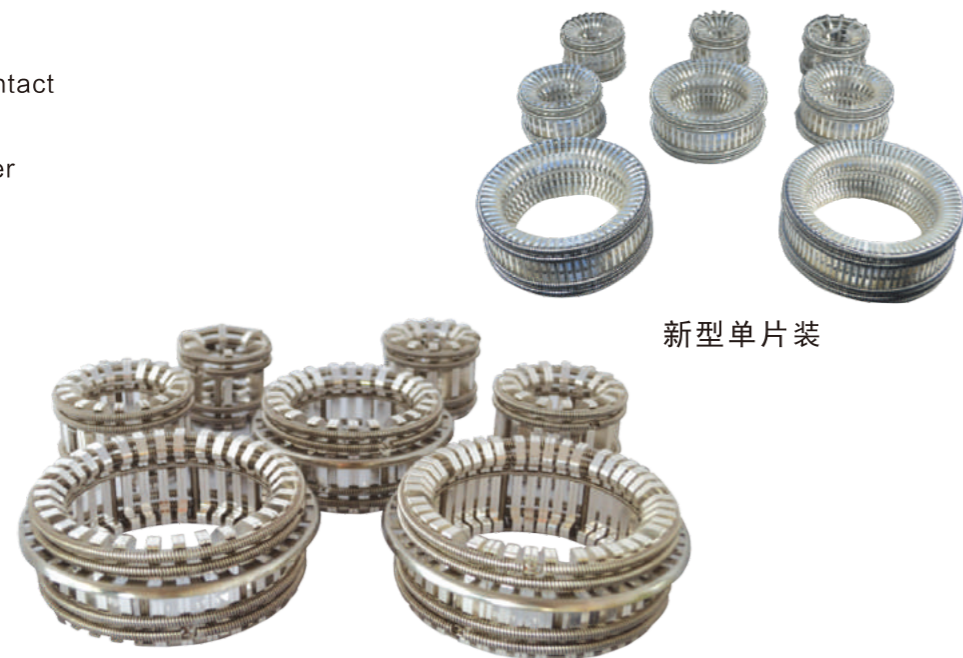


图号	额定电流 (A)	L	D	D1	D2
BT.12.129	630A	72	$\phi 35$	$\phi 26$	$\phi 29$
BT.12.130	630A	82	$\phi 35$	$\phi 26$	$\phi 29$
BT.12.131	1250A	82	$\phi 49$	$\phi 35$	$\phi 43$
BT.12.132	1600A	82	$\phi 55$	$\phi 38$	$\phi 49$
BT.12.133	2000A	102	$\phi 79$	$\phi 60$	$\phi 73$
BT.12.134	3150A	107	$\phi 109$	$\phi 84$	$\phi 100$
BT-12.136	4000A	107	$\phi 109$	$\phi 84$	$\phi 100$
备注	长度 L 可根据实际要求而定				

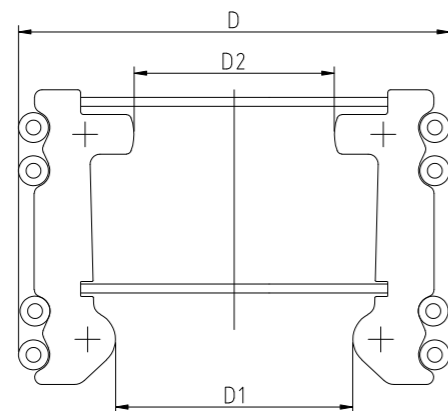
BT.12.135.1-135.8

630A-4000A

名称：梅花触头
Name: Tulip contact
材质：铜
Material: Copper



新型单片装



技术 参 数	型号	触片数量	闭合圆 D1	配静触头 D5	闭合圆 D2	配导电杆 D6	外径 D	触壁外径 D3	触臂长度 L1	静触头长度 L2
	3150/40	64/82	∅ 107.2	∅ 109	∅ 100	∅ 102	∅ 158	∅ 109	309	107
	2000/40	48	∅ 77.2	∅ 79	∅ 70	∅ 72	∅ 128	∅ 79	298	102
	1600/40	36	∅ 53.2	∅ 55	∅ 46	∅ 48	∅ 94	∅ 55	298	82
	1250/40	30	∅ 47.2	∅ 49	∅ 40	∅ 42	∅ 88	∅ 50	298	82
	1250/31.5	30	∅ 47.2	∅ 49	∅ 40	∅ 42	∅ 88	∅ 50	298	82
	1250/31.5	24	∅ 33.2	∅ 35	∅ 26	∅ 28	∅ 74	∅ 50	298	82
	630/20	12	∅ 33.2	∅ 35	∅ 26	∅ 28	∅ 74	∅ 44	298	72

BT.12.137.1-137.9

名称：触片
Name: Contact
材质：铜
Material: Copper



BT.12.138.1-138.9

名称：骨架
Name: Skeleton
材质：不锈钢
Material: Stainless steel

